



Structure Change of Chinese Economy 2007-2010

-- Based on I/O tables 2007 and 2010

Li Shantong Du Lixin



Outline

- **Introduction**
- **GDP structure**
- **Structure of Manufacture**
- **Trade Structure**
- **Intermediate Input Rate**



Introduction

- **Background (2007-2010)**
 - 11th Five Year Plan- Scientific Development Approach
 - International Financial Crisis - Global Economic Growth Slow Down
 - Cost of factors(labor and land) increased very rapidly
- **Two turning points**
 - GDP growth rate
 - Contribution of net export to GDP growth

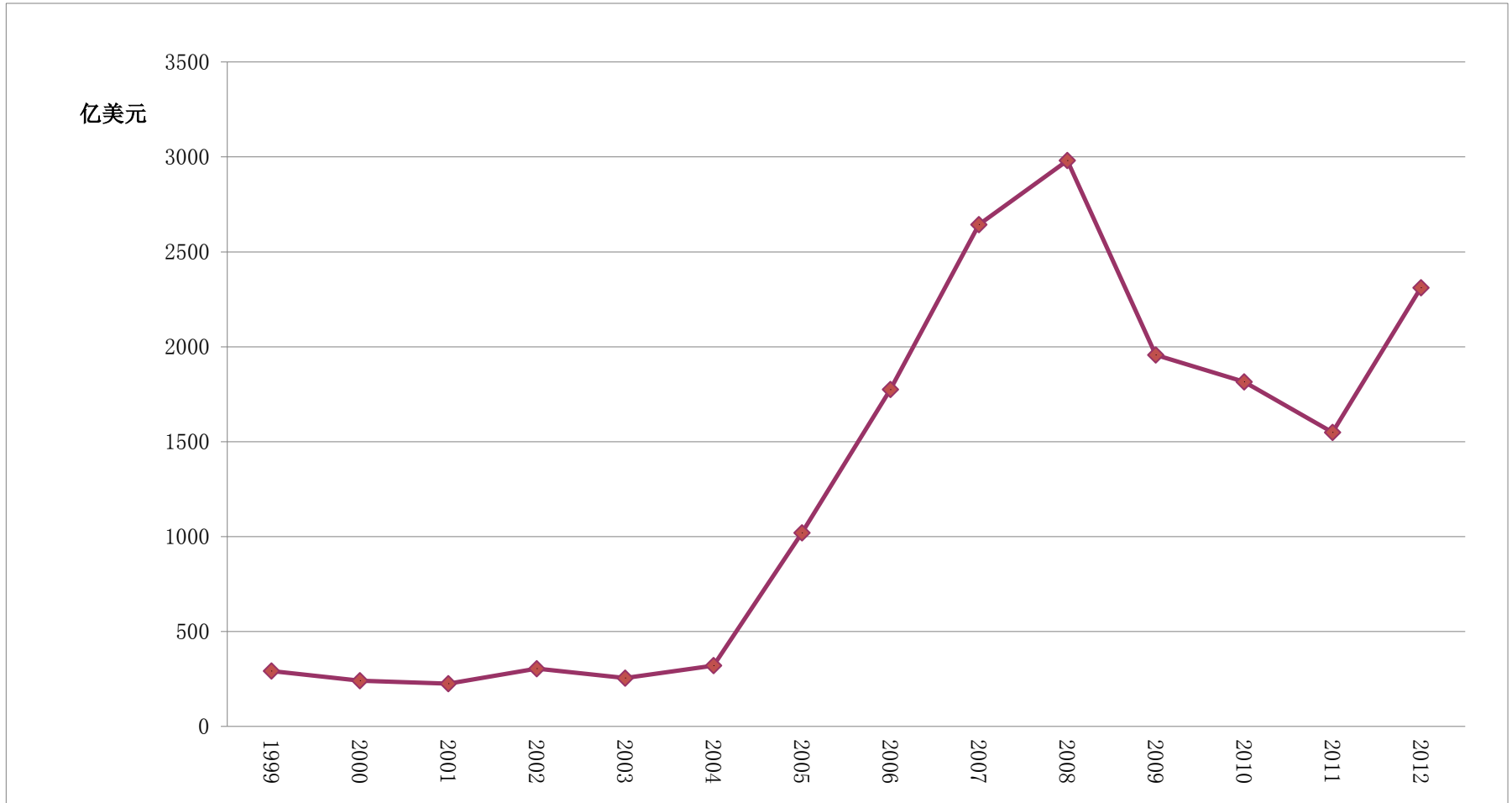


GDP Growth Rate (2000-2012)





Net Export (2000-2012)





Industrial Structure



GDP Structure

| | 1997 | 2002 | 2005 | 2007 | 2010 |
|--------------------|------|------|------|------|------|
| Primary Industry | 19.5 | 13.6 | 12.5 | 10.8 | 10.0 |
| Secondary Industry | 52.3 | 45.2 | 47.8 | 50.6 | 48.2 |
| Tertiary Industry | 28.2 | 41.1 | 39.7 | 38.7 | 41.8 |

| | 2002 | 2005 | 2007 | 2010 | 2007-2010 |
|--|-------|-------|-------|-------|-----------|
| Labor Intensive Industry | 34.61 | 31.84 | 31.44 | 29.05 | -2.39 |
| Manufacture of Foods and Tobacco | 11.77 | 11.62 | 10.54 | 10.64 | 0.11 |
| Manufacture of Textile | 5.84 | 5.29 | 5.09 | 5.03 | -0.06 |
| Manufacture of Textile Wearing Apparel, Footwear, Caps, Leather, Fur, and Its products | 4.19 | 4.81 | 4.1 | 3.47 | -0.7 |
| Processing of Timbers and Manufacture of Furniture | 2.81 | 2.22 | 2.7 | 2.17 | -0.54 |
| Papermaking, Printing and Manufacture of Articles for Culture, Education and Sports | 6.2 | 4.27 | 3.68 | 3.2 | -0.48 |
| Manufacture of Artwork, Other Manufacture | 3.71 | 3.55 | 5.25 | 4.54 | -0.71 |
| Capital intensive Industry | 36.45 | 38.67 | 39.57 | 38.96 | -0.61 |
| Processing of Petroleum, Coking, Processing of Nuclear Fuel | 2.73 | 3.72 | 3.88 | 4.48 | 0.6 |
| Chemical Industry | 15.21 | 14.08 | 13.04 | 13.52 | 0.48 |
| Manufacture of Nonmetallic Mineral Products | 4.99 | 6.82 | 6.48 | 6.58 | 0.1 |
| Smelting and Rolling of Metals | 9.81 | 10.33 | 12.35 | 10.95 | -1.4 |
| Manufacture of Metal Products | 3.81 | 3.81 | 3.82 | 3.43 | -0.39 |
| Technology Intensive Industry | 28.93 | 29.48 | 28.99 | 31.99 | 3 |
| Manufacture of General Purpose and Special Purpose Machinery | 9.55 | 9.6 | 9.44 | 10.49 | 1.06 |
| Manufacture of Transport Equipment | 6.62 | 6.05 | 6.65 | 8.4 | 1.75 |
| Manufacture of Electrical Machinery and Equipment | 4.49 | 5.48 | 4.79 | 5.47 | 0.68 |
| Manufacture of Communication Equipment, Computer and Other Electronic Equipment | 7.14 | 7.06 | 7.05 | 6.51 | -0.53 |
| Manufacture of Measuring Instrument and Machinery for Cultural Activity & Office Work | 1.14 | 1.3 | 1.07 | 1.12 | 0.05 |



More Energy Saving

| | 2002 | 2005 | 2007 | 2010 | 2007-2010 |
|----------------------------------|------|------|------|------|-----------|
| Low Energy Intensive Industry | 33.2 | 34.4 | 33.2 | 35.5 | 2.3 |
| Middle Energy Intensive Industry | 34.1 | 30.7 | 31.1 | 29.0 | -2.1 |
| High Energy Intensive Industry | 32.7 | 35.0 | 35.8 | 35.5 | -0.3 |

| | 2005 | 2007 | 2010 | 2007-2010 |
|--|--------------|--------------|--------------|--------------|
| Producer' Services | 26.30 | 26.63 | 28.75 | 2.12 |
| Traffic, Transport and Storage | 5.69 | 5.50 | 4.69 | -0.80 |
| Post | 0.16 | 0.13 | 0.12 | -0.01 |
| Information Transmission, Computer Services and Software | 2.58 | 2.26 | 2.20 | -0.06 |
| Wholesale and Retail Trades | 7.32 | 6.51 | 7.57 | 1.05 |
| Financial Intermediation | 3.41 | 5.05 | 5.20 | 0.15 |
| Real Estate | 4.46 | 4.63 | 5.64 | 1.01 |
| Leasing and Business Services | 1.57 | 1.43 | 1.93 | 0.50 |
| Research and Experimental Development | 0.25 | 0.23 | 0.28 | 0.06 |
| Comprehensive Technical Services | 0.86 | 0.89 | 1.11 | 0.23 |
| Consumer' Services | 4.60 | 4.17 | 4.13 | -0.05 |
| Hotels and Catering Services | 2.27 | 2.09 | 2.00 | -0.09 |
| Services to Households and Other Services | 1.69 | 1.51 | 1.51 | 0.00 |
| Culture, Sports and Entertainment | 0.64 | 0.57 | 0.62 | 0.05 |
| Public Services | 8.79 | 7.86 | 8.91 | 1.05 |
| Management of Water Conservancy, Environment and Public Facilities | 0.46 | 0.42 | 0.43 | 0.02 |
| Education | 3.06 | 2.75 | 2.98 | 0.24 |
| Health, Social Security and Social Welfare | 1.59 | 1.43 | 1.48 | 0.05 |
| Public Management and Social Organization | 3.69 | 3.26 | 4.02 | 0.75 |



Trade Structure



Export (%)

| | 2005 | 2007 | 2010 | 2007-2010 |
|--------------------|--------------|--------------|--------------|--------------|
| Agriculture | 0.88 | 0.70 | 0.75 | 0.06 |
| Mining | 1.05 | 0.67 | 0.48 | -0.19 |
| Manufacture | 81.58 | 84.25 | 82.43 | -1.82 |
| Service | 16.10 | 13.89 | 15.39 | 0.29 |

| | 2005 | 2007 | 2010 | 2007-2010 |
|---|-------|-------|-------|-----------|
| Labor Intensive Industry | 28.13 | 27.12 | 25.67 | -1.45 |
| Manufacture of Foods and Tobacco | 2.81 | 2.37 | 2.39 | 0.02 |
| Manufacture of Textile | 9.51 | 10.21 | 9.74 | -0.47 |
| Manufacture of Textile Wearing Apparel, Footwear, Caps, Leather | 8.20 | 7.05 | 6.28 | -0.77 |
| Processing of Timbers and Manufacture of Furniture | 2.84 | 3.01 | 2.92 | -0.09 |
| Papermaking, Printing and Manufacture of Articles for Culture, Education and Sports | 3.48 | 2.81 | 2.46 | -0.35 |
| Manufacture of Artwork, Other Manufacture | 1.29 | 1.66 | 1.87 | 0.21 |
| Capital intensive Industry | 20.56 | 22.61 | 20.89 | -1.72 |
| Processing of Petroleum, Coking, Processing of Nuclear Fuel | 1.45 | 0.95 | 0.89 | -0.06 |
| Chemical Industry | 8.91 | 9.00 | 10.24 | 1.24 |
| Manufacture of Nonmetallic Mineral Products | 1.62 | 1.84 | 2.06 | 0.22 |
| Smelting and Rolling of Metals | 3.35 | 6.41 | 3.97 | -2.44 |
| Manufacture of Metal Products | 5.23 | 4.42 | 3.75 | -0.67 |
| Technology Intensive Industry | 51.31 | 50.27 | 53.44 | 3.17 |
| Manufacture of General Purpose and Special Purpose Machinery | 6.08 | 7.12 | 7.76 | 0.64 |
| Manufacture of Transport Equipment | 3.09 | 4.08 | 5.53 | 1.45 |
| Manufacture of Electrical Machinery and Equipment | 7.56 | 8.47 | 10.07 | 1.59 |
| Manufacture of Communication Equipment, Computer and Other Electronic Equipment | 27.32 | 26.56 | 26.16 | -0.41 |
| Manufacture of Measuring Instrument and Machinery for Cultural Activity & Office Work | 7.26 | 4.02 | 3.92 | -0.11 |



Import (%)

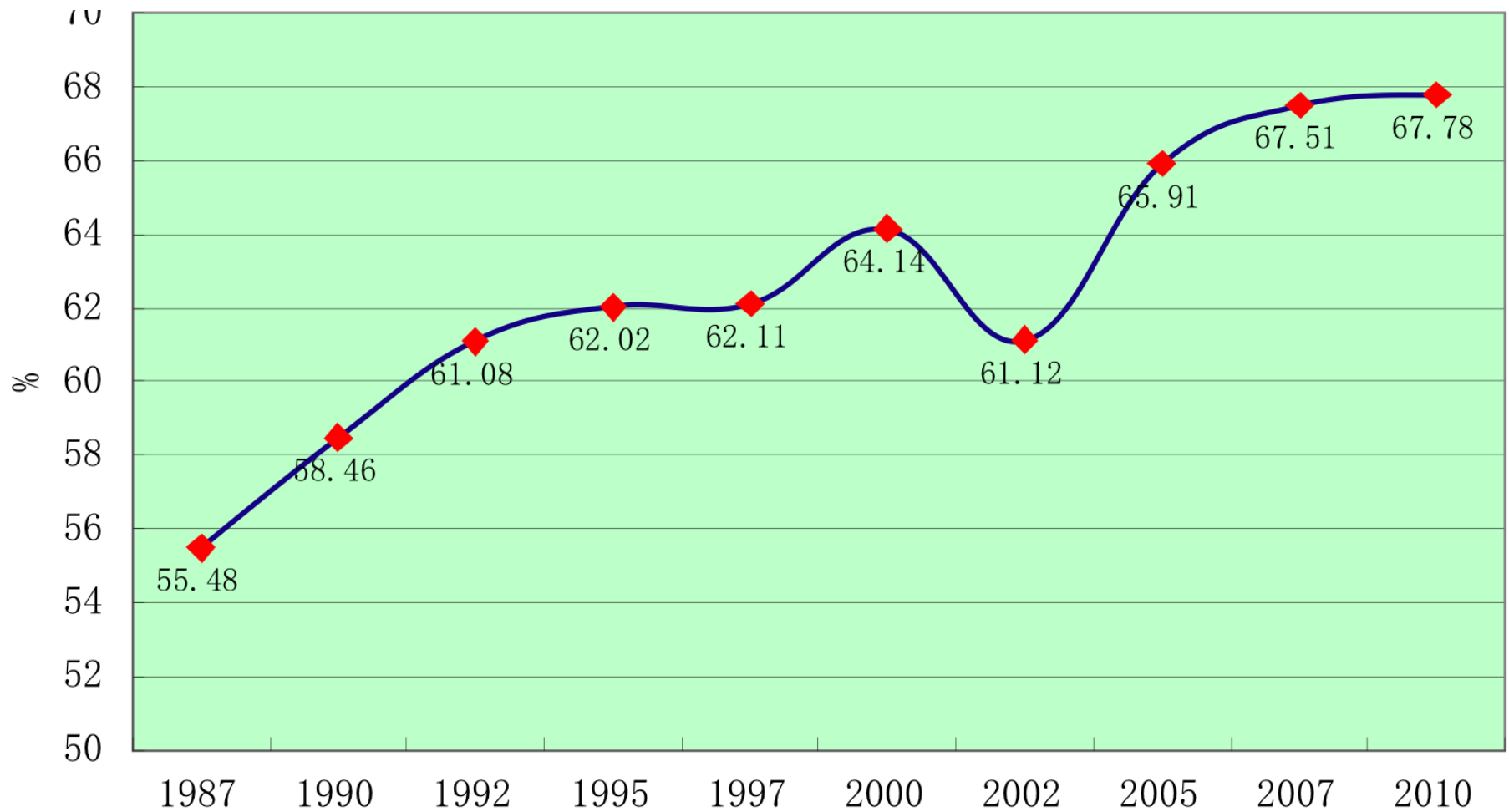
| | 2005 | 2007 | 2010 | 2007-2010 |
|--------------------|--------------|--------------|--------------|--------------|
| Agriculture | 2.83 | 3.15 | 4.04 | 0.90 |
| Mining | 6.20 | 13.97 | 17.32 | 3.35 |
| Manufacture | 81.28 | 74.69 | 71.05 | -3.64 |
| Service | 9.45 | 7.87 | 7.23 | -0.64 |



Intermediate Input Rate



Intermediate Input Rate



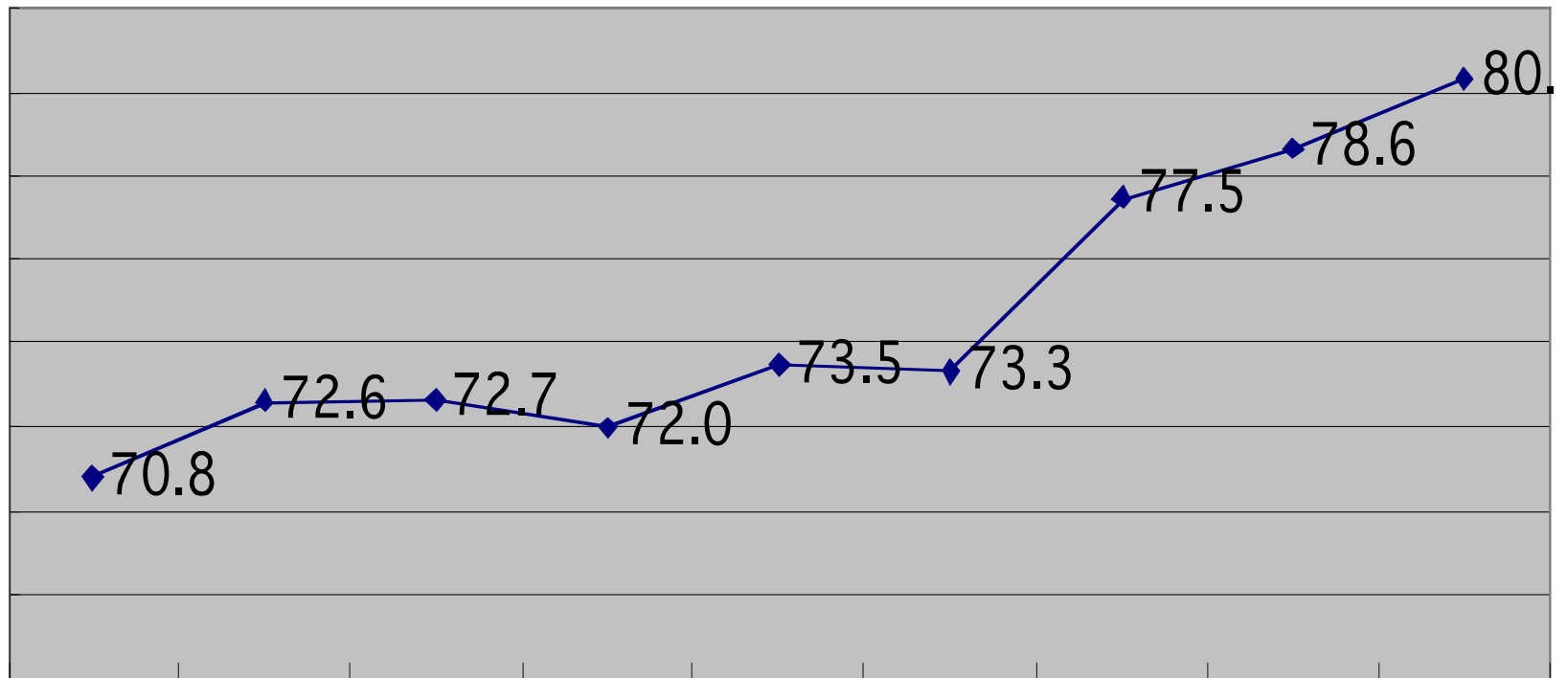


Intermediate Input Rate

| | 1992 | 1995 | 1997 | 2000 | 2002 | 2005 | 2007 | 2010 |
|--------------------|-------|-------|-------|-------|-------|-------|-------|-------|
| Primary Industry | 35.58 | 40.23 | 40.27 | 42.17 | 41.81 | 41.52 | 41.38 | 41.53 |
| Secondary Industry | 71.32 | 71.28 | 70.16 | 71.99 | 71.08 | 75.29 | 76.71 | 77.83 |
| Tertiary Industry | 49.14 | 44.86 | 49.69 | 50.81 | 46.84 | 49.37 | 46.52 | 44.92 |



Intermediate Input Rate of Manufacture Sector



| | Sector | 2002 | 2005 | 2007 | 2010 | 2007-2010 |
|--|--|-------|-------|-------|-------|-----------|
| L a b o r | Manufacture of Foods and Tobacco | 68.94 | 72.29 | 75.64 | 78.92 | 3.28 |
| | Manufacture of Textile | 75.22 | 79.09 | 80.49 | 79.40 | (1.10) |
| | Manufacture of Textile Wearing Apparel, Footwear, Caps, Leather, Fur, Feather(Down) and Its products | 75.42 | 75.04 | 77.69 | 80.82 | 3.13 |
| | Processing of Timbers and Manufacture of Furniture | 72.71 | 76.74 | 76.23 | 80.78 | 4.55 |
| | Papermaking, Printing and Manufacture of Articles for Culture, Education and Sports Activities | 66.34 | 75.36 | 76.18 | 79.42 | 3.24 |
| | Manufacture of Artwork, Other Manufacture | 50.96 | 55.28 | 51.91 | 55.62 | 3.71 |
| C a p i t a l | Processing of Petroleum, Coking, Processing of Nuclear Fuel | 82.80 | 81.23 | 82.20 | 80.16 | (2.04) |
| | Chemical Industry | 73.07 | 78.19 | 79.69 | 80.64 | 0.95 |
| | Manufacture of Nonmetallic Mineral Products | 67.12 | 73.18 | 72.53 | 78.05 | 5.52 |
| | Smelting and Rolling of Metals | 75.60 | 79.45 | 80.48 | 82.19 | 1.71 |
| | Manufacture of Metal Products | 76.33 | 77.97 | 79.18 | 81.31 | 2.13 |
| T e c h n o l o g y | Manufacture of General Purpose and Special Purpose Machinery | 71.92 | 76.04 | 76.91 | 78.85 | 1.94 |
| | Manufacture of Transport Equipment | 73.78 | 78.58 | 80.52 | 80.90 | 0.37 |
| | Manufacture of Electrical Machinery and Equipment | 75.86 | 79.18 | 82.96 | 84.09 | 1.13 |
| | Manufacture of Communication Equipment, Computer and Other Electronic Equipment | 78.98 | 84.34 | 83.47 | 84.62 | 1.15 |
| | Manufacture of Measuring Instrument and Machinery for Cultural Activity & Office Work | 74.27 | 78.42 | 78.84 | 79.04 | 0.20 |



Thank you very much!